

# Stainless steel process gauges

## Model WPS

Nominal size:

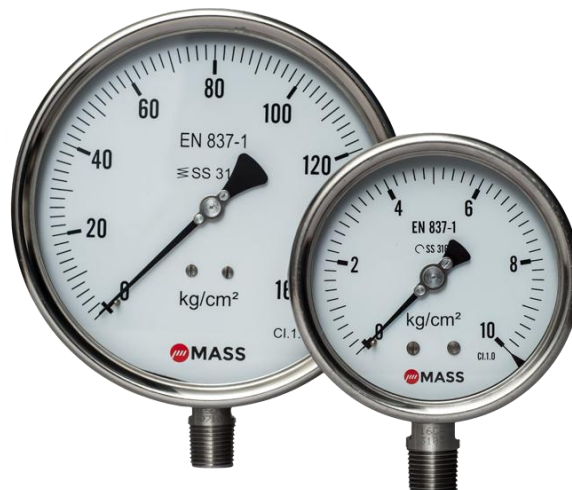
63 mm (2.5"), 100 mm (4"), 115 mm (4.5"), 150 mm (6") or 250 mm (10")

ASME B40.100 / EN 837-1 / IS-3624

Accuracy: Class 1 (1%) / Class 1.6 (1.6%) for 63mm

### Features

- Rugged stainless steel construction
- Measuring system stainless steel or Monel
- Socket and case welded
- Protection IP54, IP65, IP66 and IP67
- Usable to full scale
- Overload protection 130 %
- Dry, liquid filled
- Optional contacts
- Optional external Zero Adjustment



### Ranges

-30 in. Hg ... 0 psi up to 0 ... 36,000 psi

-1 ... 0 bar up to 0 ... 2500 bar & kg/cm<sup>2</sup>

-100 ... 0 kPa up to 0 ... 250,000 kPa

### Applications

Chemical & petrochemical industries, refineries

Fertilizer, thermal & nuclear power plants

OEM & machine apparatus

Technical specification	WPS				
	63	100	115	150	250
Dial size in mm	63	100	115	150	250
Construction	Open front cylindrical case with snap action bayonet ring with blow out disc				
Measuring principle	Bourdon tube				
Range in kg/cm <sup>2</sup> (or bar)	0.6 1 1.6 2.5 4 6 10 16 25 40 60 100 160 250 400 600 1,000 1,600 2,500				
Overpressure limit	-1/0 -1/0.6 -1/1.5 -1/3 -1/5 -1/9 -1/15 -1/24				
Pressure type	130 % F.S., short time.				
Process connection	Gauge, vacuum and compound				
Connection location	1/8" 1/4" 3/8" 1/2" BSP / NPT (M) , M20x1.5 (M)				
Material	Others on request				
Pressure connection	Lower, back				
Tube	Stainless steel 316, optional 316L, Monel				
Case/bayonet ring	Stainless steel 316, optional 316L, Monel				
Window	Stainless steel 304 , optional 316L				
Dial	Instrument glass, optional laminated safety glass, acrylic glass				
Pointer	Aluminum, black markings on white background, others on request				
Movement	Aluminum, black optional micrometer adjustment				
Accuracy	Class1.6 (1.6% F.S)		Class 1 (1 % F.S.)		Class1 (1% F.S.), optional 0.5% F.S.
Ambient temperature	Stainless steel 304				
Medium temperature	-40 ... 60 °C (-40 ... 140 °F)				
Storage temperature	Max. 200 °C (392 °F) (dry), max. 100 °C (212 °F) (for liquid filled)				
Effect	-40 ... 65 °C (-40 ... 150 °F)				
Protection according	Max. 0,3 % / 10 K				
Conformity according to RL 94/9/EC appendix X for mechanical equipment in potential hazardous areas (for 63mm only)	IP54/IP65/IP66/IP67				
Filling liquids	Optional, Marking CE EX II 2 GD c				
Mounting	File no. XXXXXXXX at notified body				
Weight dry/filled in kg	0044, TUV NORD CERT (only with safety glass)				
Accessories, options	Glycerin, silicone, halocarbon, others on request				
	Standard stem, optional panel, bracket, surface or others on request				
	0.1 / 0.17	0.51 / 0.86	0.53 / 0.88	0.88 / 1.78	2.02 / 3.52
	NACE, diaphragm seals, valves, electric contacts, dampener, gauge saver, syphon etc				

All specifications are subject to change without notice.

